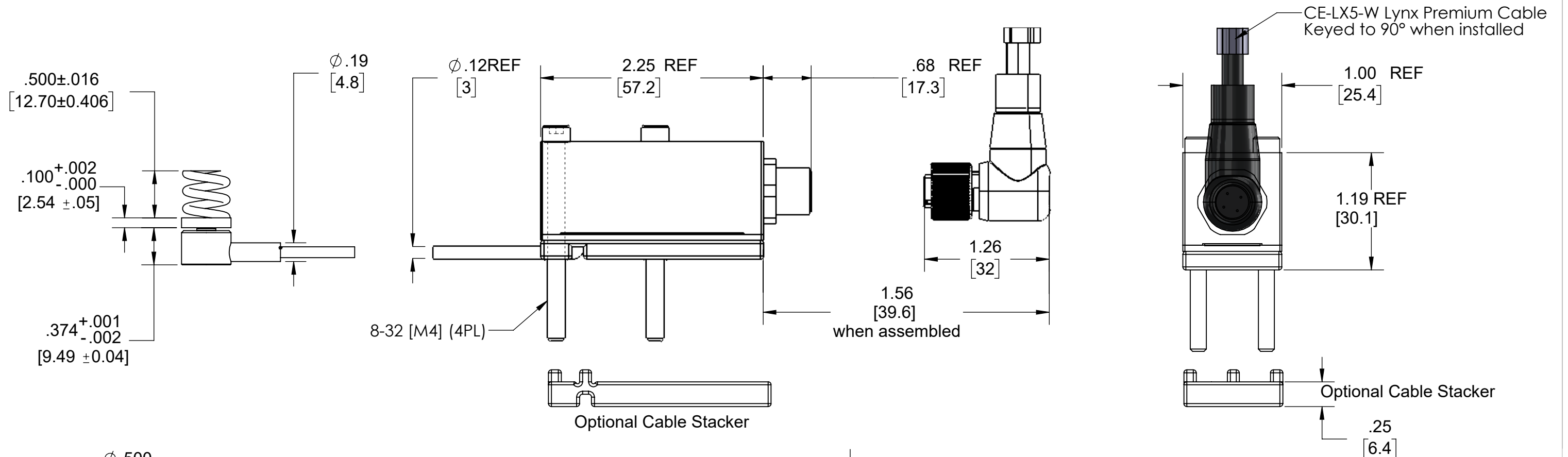
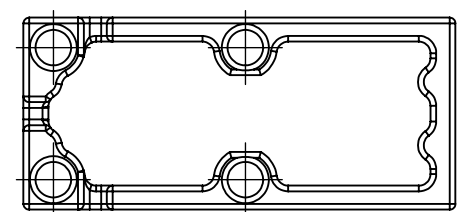


Lynx™ Mold Deflection Sensor LS-MD-040 Installation—Sensor and Optional Cable Stacker Dimensions



CABLE STACKERS	SCREW LENGTH	CABLE STORED
1	1.75 [45.0]	6.00" [152.4]
2	2.00 [50.0]	12.00" [304.8]
3	2.25 [57.0]	18.00" [457.2]
4	2.50 [64.0]	24.00" [609.6]

- NOTES:
- ENCLOSED EJECTOR BOX SUGGESTED.
 - DO NOT SCALE PRINT
 - BREAK ALL SHARP EDGES, 0.005 [0.03] R MAX
 - DIMENSIONS IN INCHES [MM], UNLESS NOTED
 - TOLERANCES UNLESS SPECIFIED:
 XXX = ±0.003 [0.08]
 XX = ±0.01 [0.3]
 ANGLES = ±3° 30°

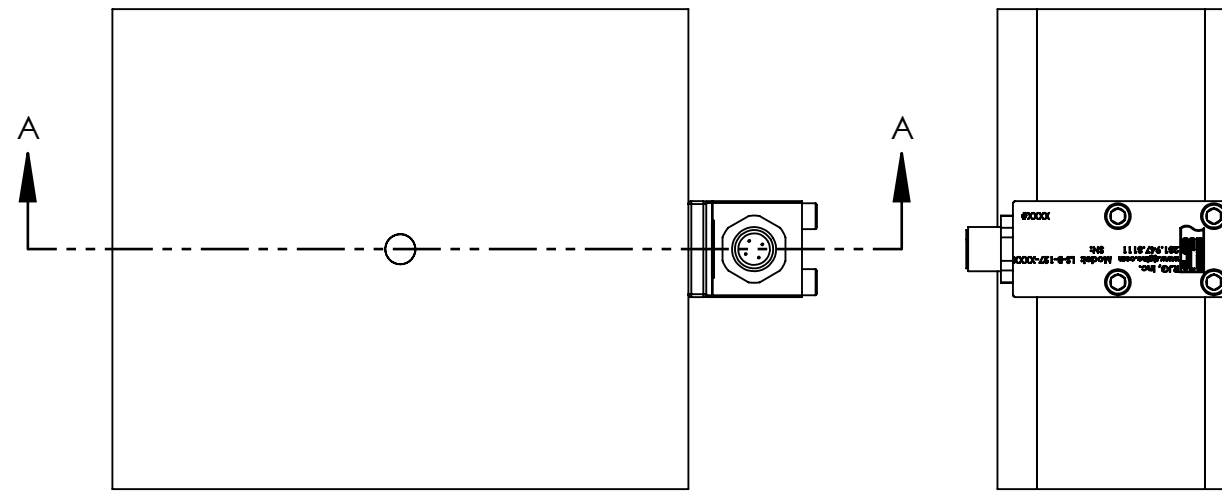


Optional Cable Stacker accomodates up to 4.0" [101.6] of extra cable.

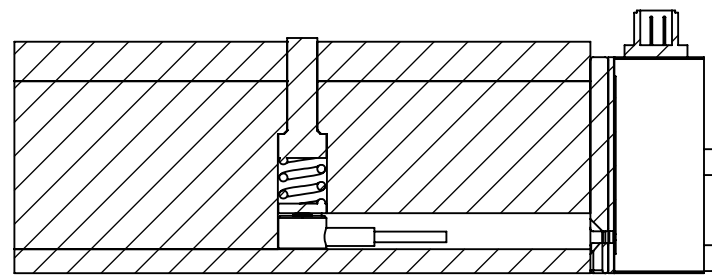
RJG
 MOLD SMART
 3111 Park Street, Traverso City, NJ 08066
 201-264-2111 | www.rjg.com

Description: LS-MD-040 Sensor Installation
 Drawn: K.J.Brettschneider
 Design:
 Check: M.Groleau
 Date: 04.16.2026

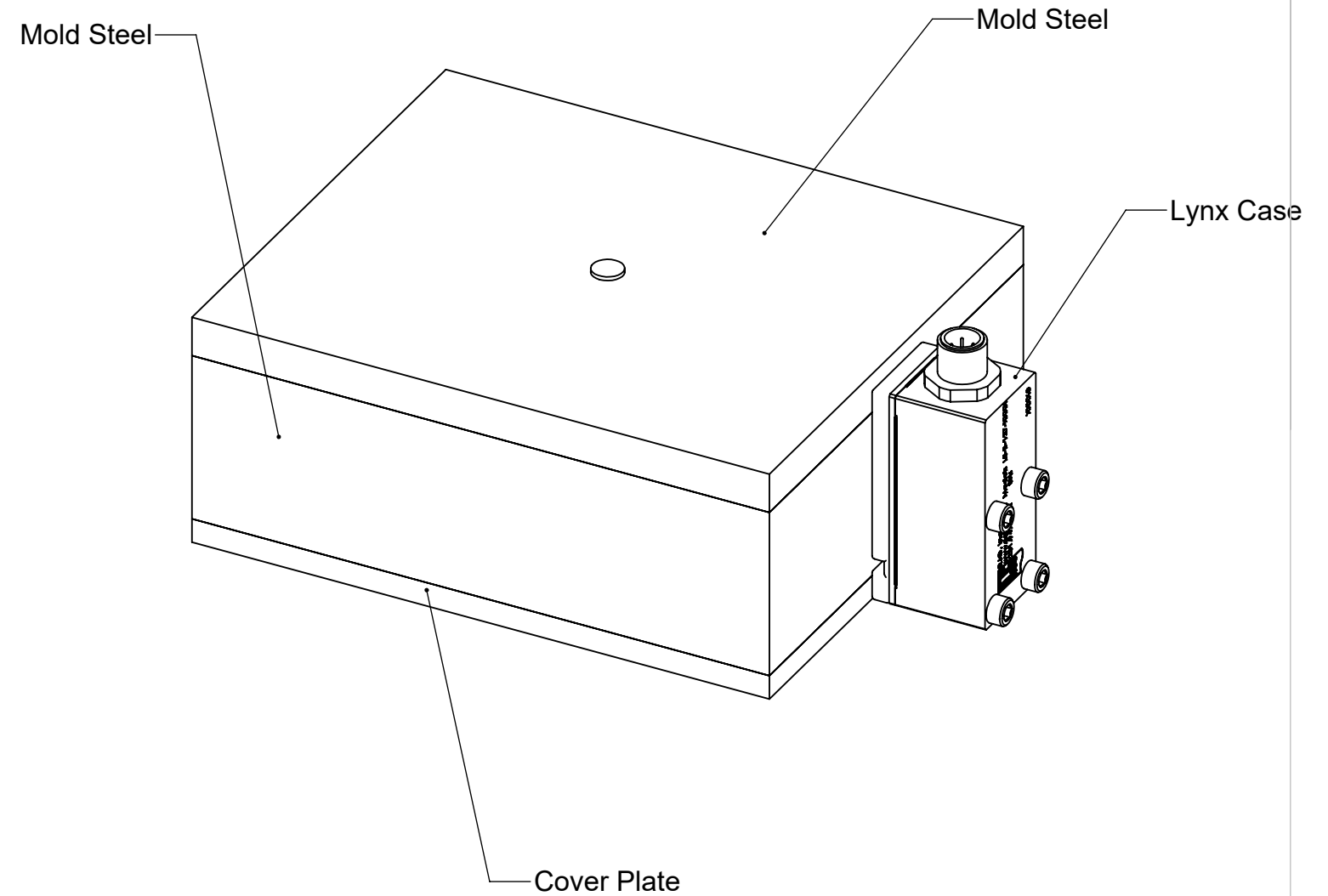
Lynx™ Mold Deflection Sensor LS-MD-040 Installation



VIEW -




SECTION A-A

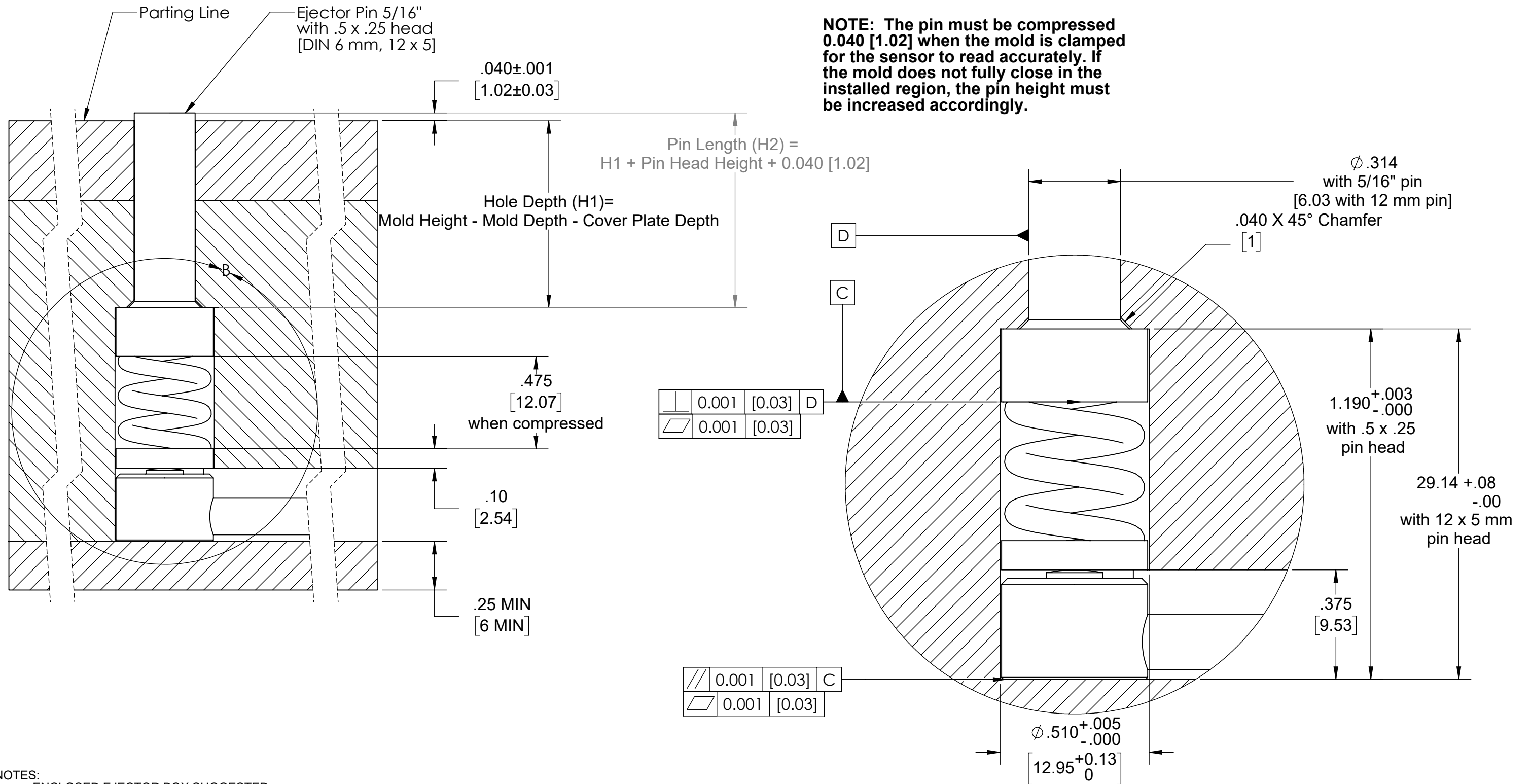


NOTES:

1. ENCLOSED EJECTOR BOX SUGGESTED.
2. DO NOT SCALE PRINT
3. BREAK ALL SHARP EDGES, 0.005 [0.03] R MAX
4. DIMENSIONS IN INCHES [MM], UNLESS NOTED
5. TOLERANCES UNLESS SPECIFIED:
 XXX = ±0.003 [0.08]
 XX = ±0.01 [0.3]
 ANGLES = ±3° 30°

 <p>311 Park Street, Traverso City, NJ 08066 201-264-2111 www.rjg.com</p>	Description: LS-MD-040 Sensor Installation
	Drawn: K.J.Brettschneider
	Design:
	Check: M.Groleau Date: 04.16.2026

Lynx™ Mold Deflection Sensor LS-MD-040 Installation

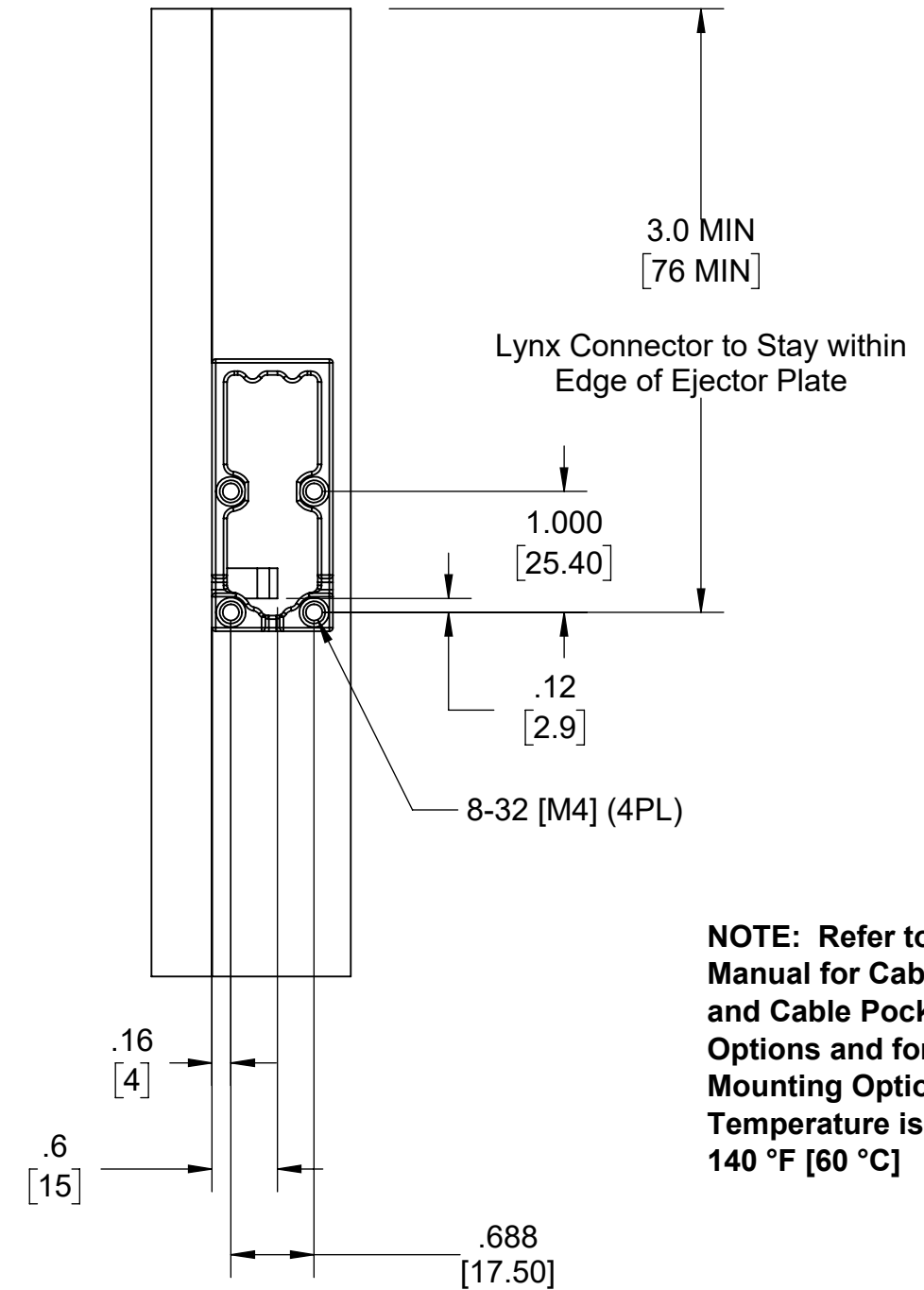
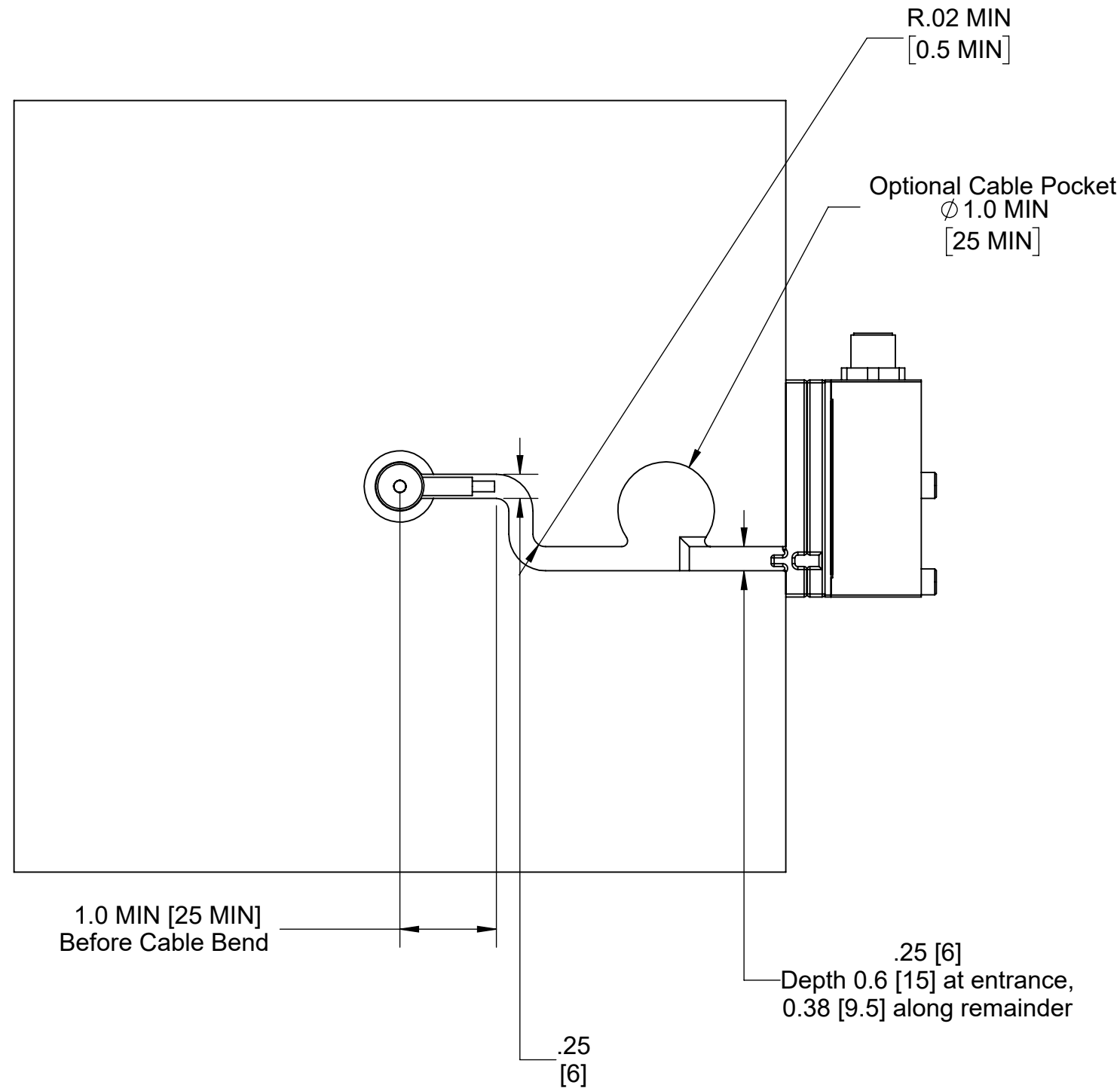


- NOTES:
1. ENCLOSED EJECTOR BOX SUGGESTED.
 2. DO NOT SCALE PRINT
 3. BREAK ALL SHARP EDGES, 0.005 [0.03] R MAX
 4. DIMENSIONS IN INCHES [MM], UNLESS NOTED
 5. TOLERANCES UNLESS SPECIFIED:
 XXX = ±0.003 [0.08]
 XX = ±0.01 [0.3]
 ANGLES = ±3° 30°

DETAIL B
SCALE 3 : 1

 311 Park Street, Traverso City, NJ 08066 201-264-2111 www.rjg.com	Description: LS-MD-040 Sensor Installation
	Drawn: K.J.Brettschneider
	Design:
	Check: M.Groleau
	Date: 04.16.2026

Lynx™ Mold Deflection Sensor LS-MD-040 Installation—Lynx™ Case Installation



NOTE: Refer to Product Manual for Cable Channel and Cable Pocket Cover Options and for Electronics Mounting Options When Mold Temperature is Greater Than 140 °F [60 °C]

- NOTES:
1. ENCLOSED EJECTOR BOX SUGGESTED.
 2. DO NOT SCALE PRINT
 3. BREAK ALL SHARP EDGES, 0.005 [0.03] R MAX
 4. DIMENSIONS IN INCHES [MM], UNLESS NOTED
 5. TOLERANCES UNLESS SPECIFIED:
 XXX = ±0.003 [0.08]
 XX = ±0.01 [0.3]
 ANGLES = ±3° 30°

<p> 3111 Park Street, Traverse City, MI 49686 231-944-2111 www.rjg.com </p>	Description: LS-MD-040 Sensor Installation
	Drawn: K.J.Brettschneider
	Design:
	Check: M.Groleau
Date: 04.16.2026	